

ProPEX® Lead-free (LF) Brass Elbow, 1/2" PEX x 1/2" Male CU

Submittal information
Revision A: Sept. 5, 2017

Project information

Job name:

Location:

Part no. ordered:

Engineer:

Date submitted:

Contractor:

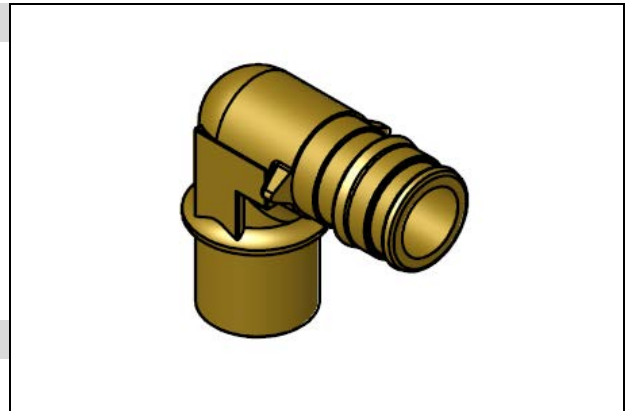
Submitted by:

Manufacturer's representative:

Approved by:

Technical data

Material:	C69300 brass
Maximum temperature (no pressure):	320°F (160°C)
Maximum working temperature/pressure:	210°F at 150 psi (99°C at 10 bar)



Product information and application use

ProPEX® lead-free (LF) brass elbows with male sweat make 90-degree connections for 1/2" Uponor PEX tubing to 1/2" female sweat.¹

✓ Description	Part number	Length	Width	Height	Weight
ProPEX LF Brass Elbow, 1/2" PEX x 1/2" Male CU	LF4730500	1.545"	0.85"	1.545"	0.21 lbs.

Installation

ProPEX expansion tool and ProPEX rings (sold separately) are required for connecting the PEX tubing. Use the appropriate ProPEX ring for connecting to PEX tubing. Refer to the Uponor AquaPEX® Professional Plumbing Installation Guide, the Uponor Commercial Piping Pocket Guide, the Uponor Hydronic Piping Design Assistance Manual (HPDAM) or the Uponor Radiant Floor Heating Installation Handbook for additional information.

Standards

CAN/CSA B137.5; ASTM F877; ASTM F1960

Codes

IPC; UPC; NSPC; NPC of Canada

Listings

IAPMO 0253; ANSI/NSF 14- and 61-certified; HUD MR 1269; ICC PMG 1006; U.P. Code, Annex G

Related applications

PEX plumbing systems
Hydronic piping systems
Radiant heating and cooling systems
Snow and ice melting systems
Permafrost protection systems
Turf conditioning systems

Contact information

Uponor Inc.
5925 148th Street West
Apple Valley, MN 55124 USA
Phone: 800.321.4739
Fax: 952.891.2008
uponorpro.com

Uponor Ltd.
6510 Kennedy Road
Mississauga, ON L5T 2X4 CANADA
Phone: 888.994.7726
Fax: 800.638.9517
uponorpro.com

¹ProPEX® is a registered trademark of Uponor Inc. ProPEX™ is a trademark of Uponor Ltd.