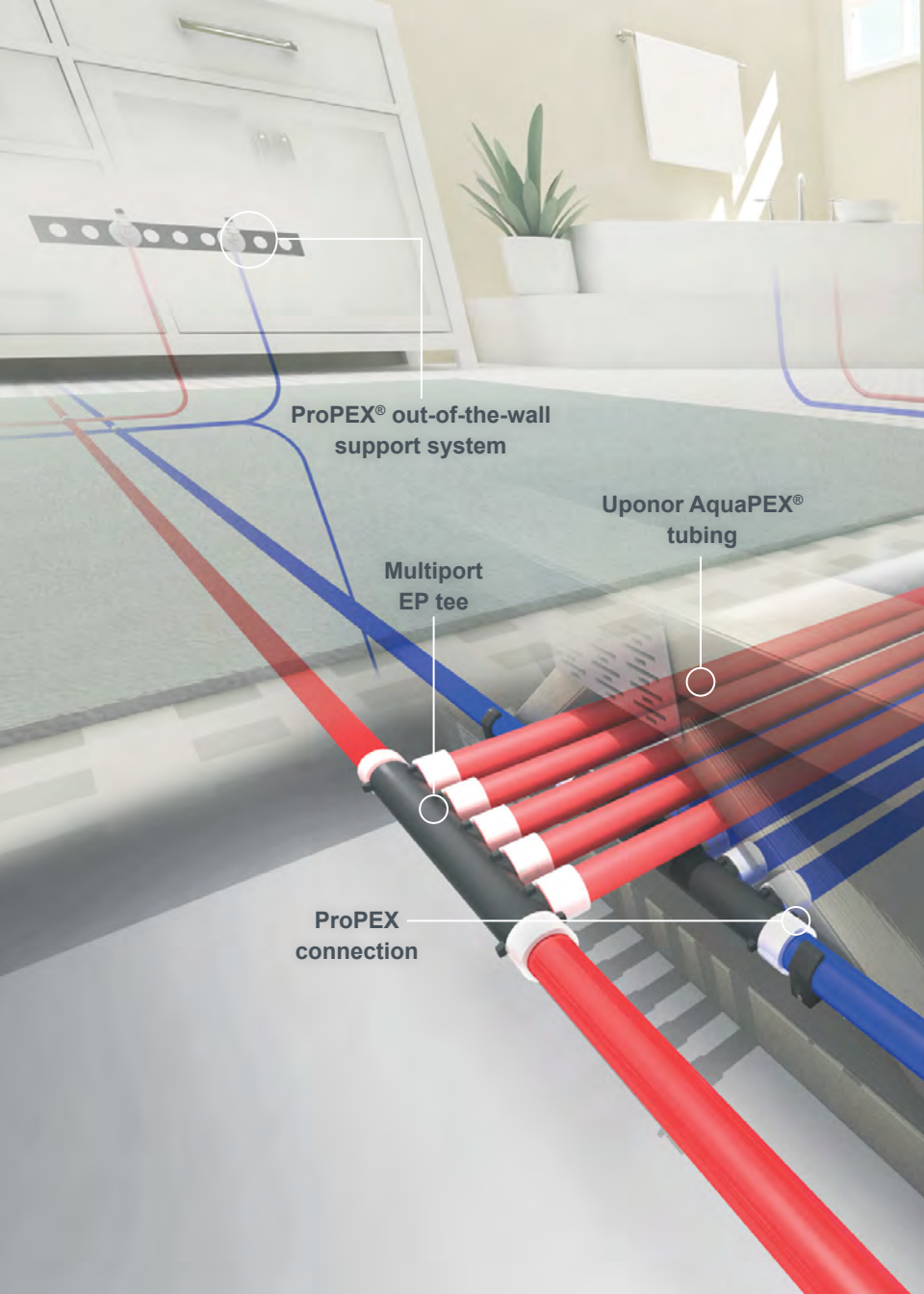




uponor

Planning map

for the plumbing trade professional

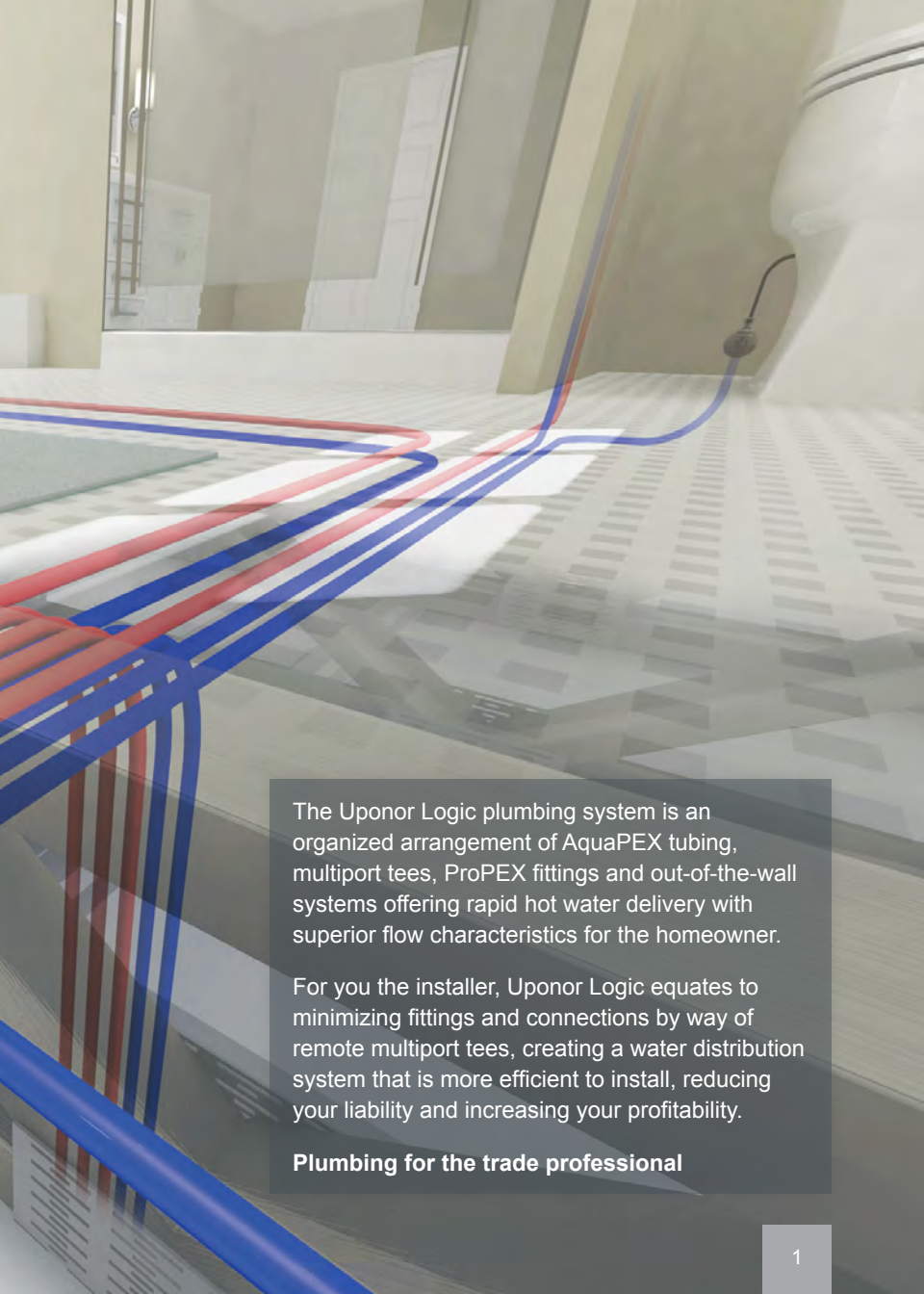


**ProPEX® out-of-the-wall
support system**

**Uponor AquaPEX®
tubing**

**Multiport
EP tee**

**ProPEX
connection**



The Uponor Logic plumbing system is an organized arrangement of AquaPEX tubing, multiport tees, ProPEX fittings and out-of-the-wall systems offering rapid hot water delivery with superior flow characteristics for the homeowner.

For you the installer, Uponor Logic equates to minimizing fittings and connections by way of remote multiport tees, creating a water distribution system that is more efficient to install, reducing your liability and increasing your profitability.

Plumbing for the trade professional

Uponor Logic plumbing system

Uponor Logic plumbing systems vs. conventional thinking

Features and benefits

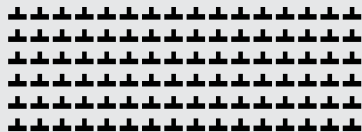
- Efficient use of time and materials
- No glues, torches or gauges necessary
- Fewer connections, flexible for tight bend radius
- Able to install in rain and high-humidity conditions
- Visual connection, no dry-fit concerns
- Fast hot-water delivery potential
- Complete lead-free offering
- Full line of multiport tees for ultimate design flexibility

Fitting and tubing usage comparison

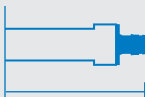
Uponor Logic fittings: 16



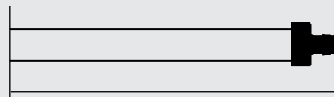
Trunk-and-branch fittings: 96

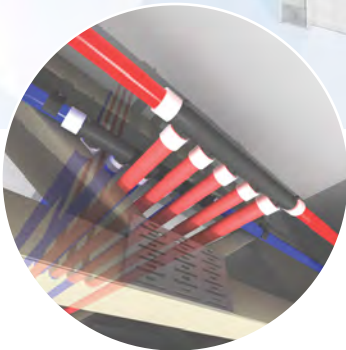
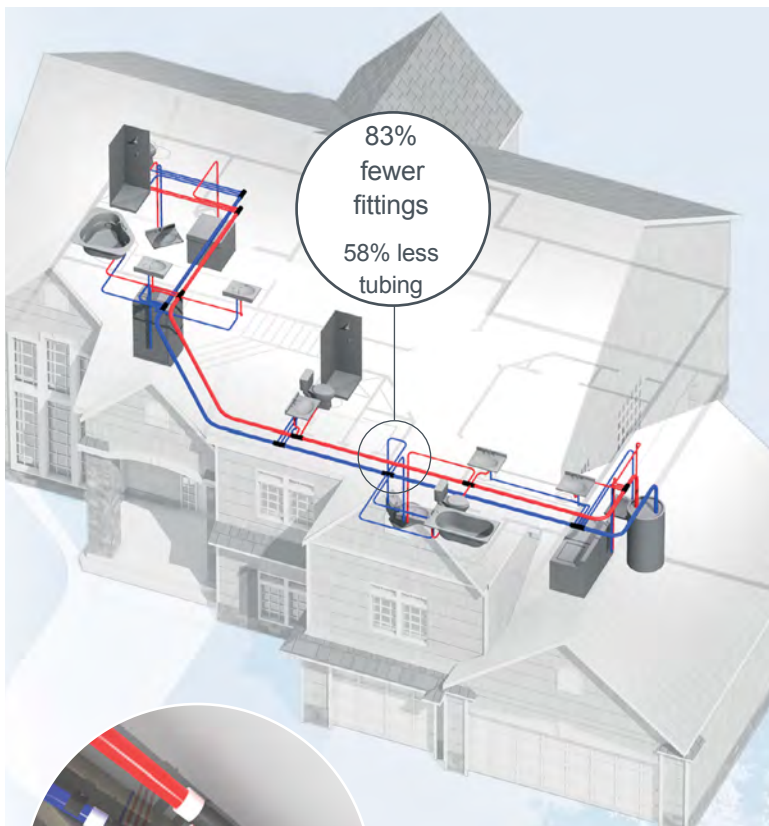


Uponor Logic tubing: 637'



Homerun tubing: 1,515'





The optimal design approach

- Minimal connections
- Minimal use of tubing
- Quick delivery of hot water

637' Uponor AquaPEX tubing
59 ProPEX connections
16 fittings

Trunk-and-branch plumbing



165
connections



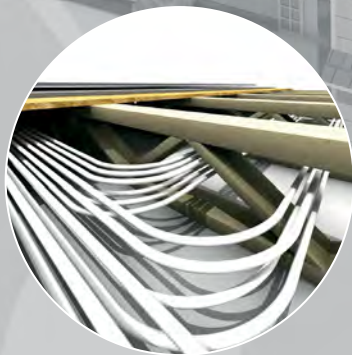
Many connections
More time to install
Higher potential for leaks
Dry-fit concerns

540' pipe (copper, CPVC, PEX)
165 connections
96 fittings

Homerun plumbing



1,515'
of tubing



Minimal connections
Inefficient use of tubing
No consecutive-use hot water
delivery benefit

1,515' pipe
48 connections
10 fittings

Uponor Logic plumbing system is built on a complete range of system components that create a flexible, lead-free plumbing solution.

ProPEX lead-free brass transition fittings



LF4525050



LF4575050



LF4515050



LF4505050

Outlet boxes



**Ice maker box
(LF5955025)**



**Washing machine box
(LF5930500)**

ProPEX out-of-the-wall support system



ProPEX LF brass angle stop valve
(full port) (LF4855038)

ProPEX escutcheon (F5670500)

PEX wall support bracket (A5750500)

Plastic bend support (A5250500)

Visit uponorpro.com or see the Uponor product catalog for our complete product line.

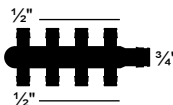
ProPEX EP multiport tees



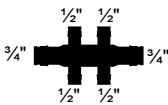
Q2237550



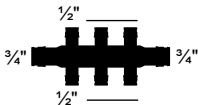
Q2237557



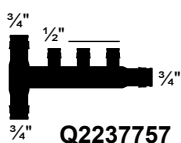
Q2387550



Q2347557



Q2367557



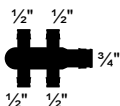
Q2237757



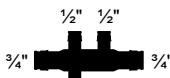
Q2227557



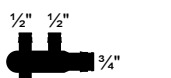
Q2247550



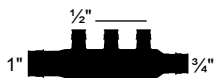
Q2347550



Q2337557



Q2337550



Q2231057



Q2261050



Q2241051



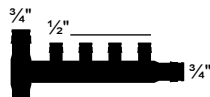
Q2267550



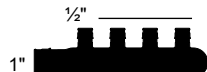
Q2261051



Q2247557



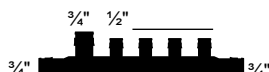
Q2247757



Q2241050



Q2241057



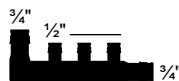
Q2247577



Q2267557



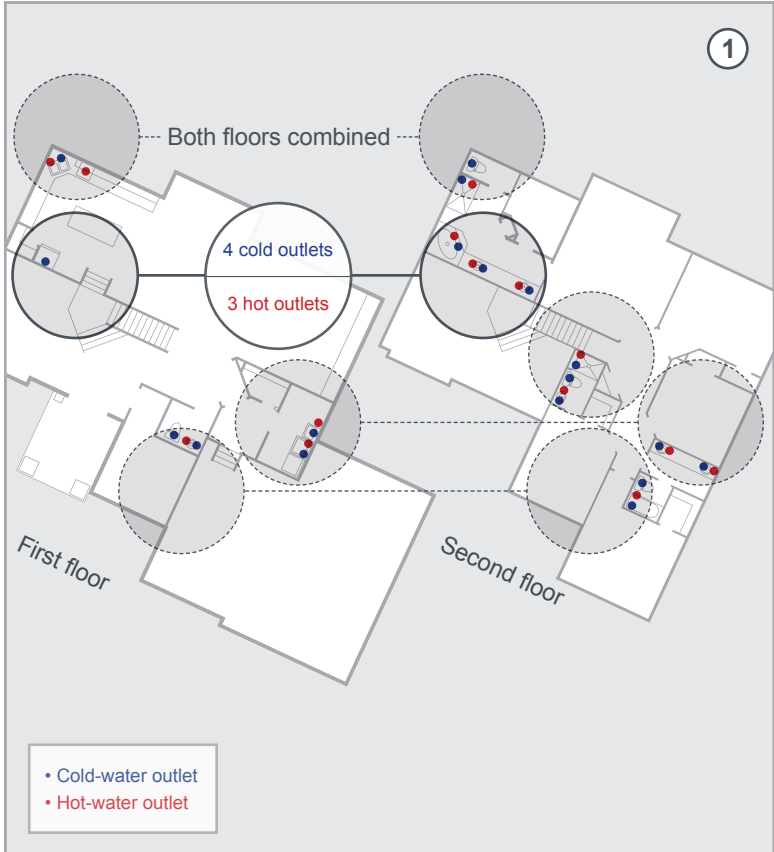
Q2261057



Q2235577

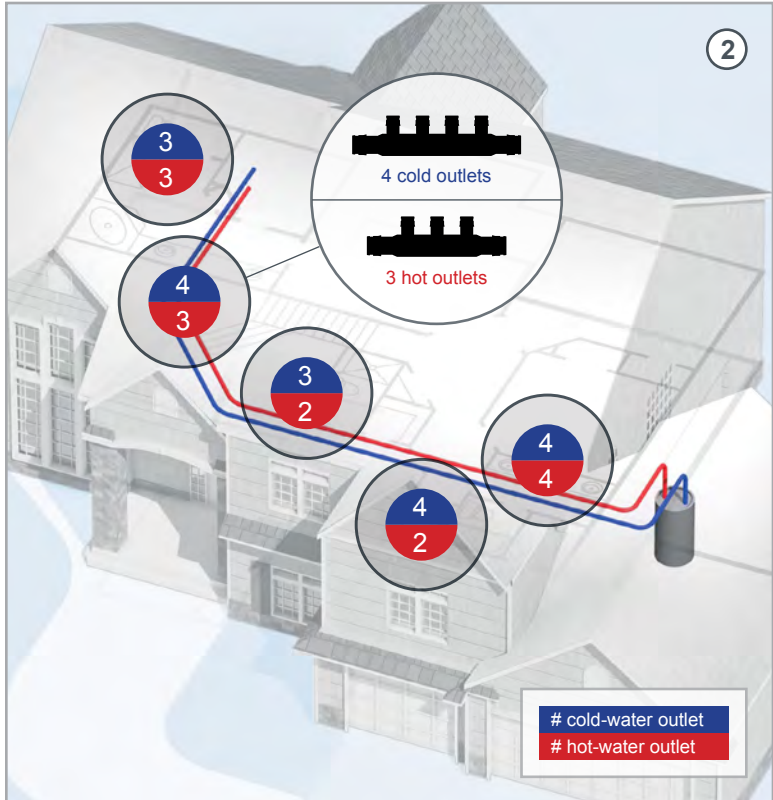
Two-story home | Planning example

- Identify location of all plumbing outlets.
- Identify fixture groupings within approximately 10' radius on both floors.



Planning for Uponor Logic is a simple, three-step process.

- Plan path through the house to connect fixture groupings.
- Identify number of hot and cold outlets for each grouping.



3 Master bathroom/
3 kitchen

3 Bathroom A
2

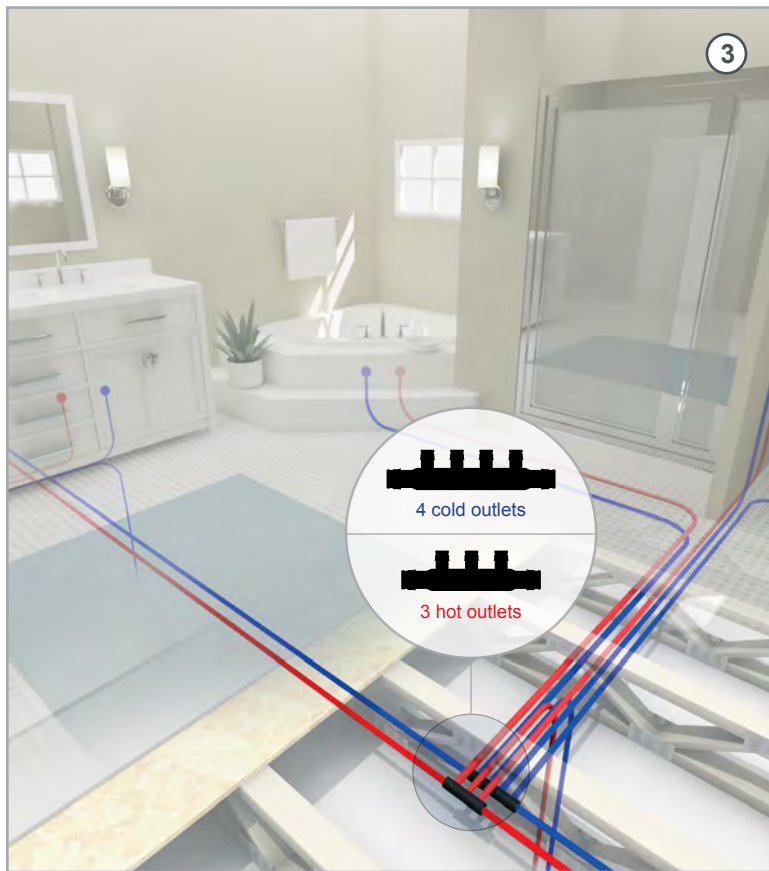
4 Bathroom
4 B/laundry

4 Master bathroom/
3 ice maker

4 Bathroom B/
2 guest bathroom

Planning for Uponor Logic is a simple, three-step process.

- Identify appropriate location of multiport tee for each grouping.
- Select appropriate multiport tee and fittings.




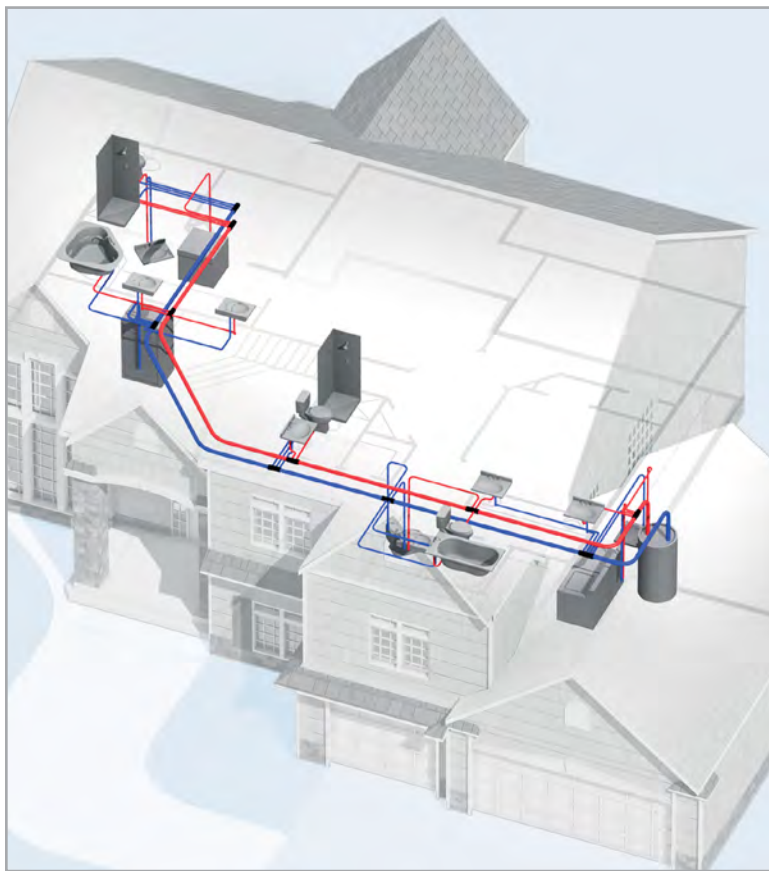
Total components for project

Q2227557  (2)

Q2247557  (4)

Q2237557  (2)

Q2237550  (2)



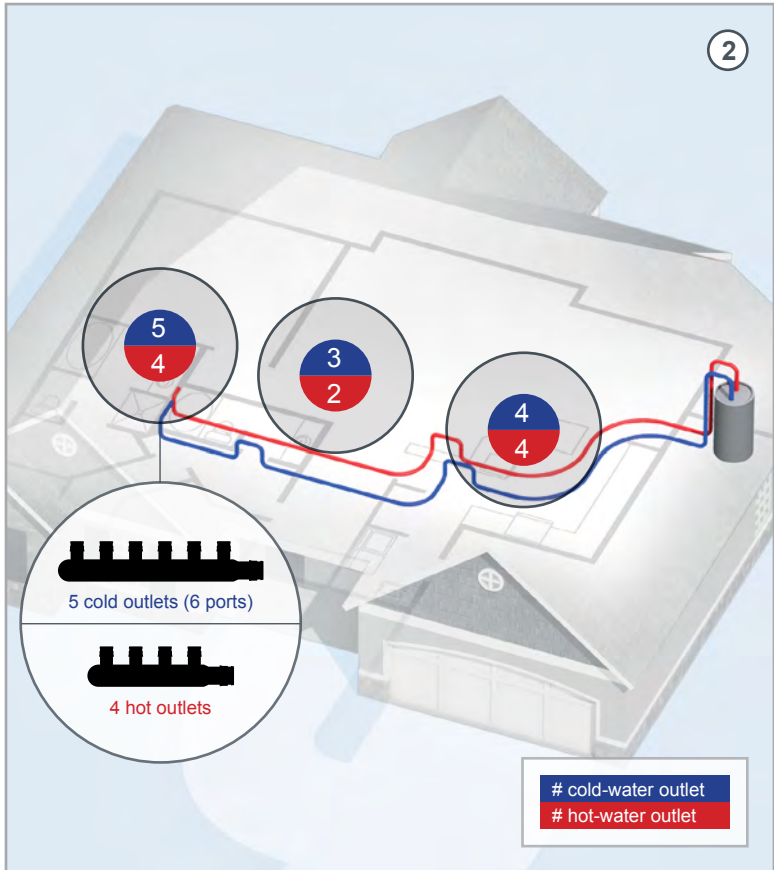
Slab-on-grade | Planning example

- Identify location of all plumbing outlets.
- Identify fixture groupings within an approximate 10' radius.



Slab-on-grade | Planning example

- Plan path through the house to connect fixture groupings.
- Identify number of outlets for each grouping.



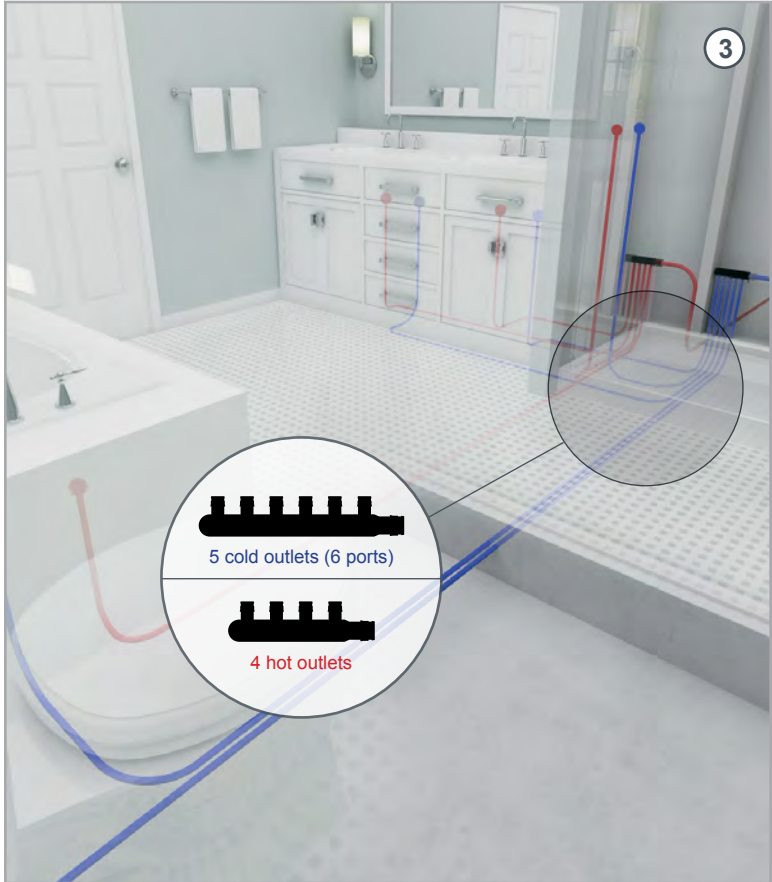
 Master bathroom

 Bathroom

 Kitchen/laundry

Slab-on-grade | Planning example

- Identify appropriate location of multiport tee for each grouping.
- Select appropriate multiport tee and fittings.




Slab-on-grade | Planning example

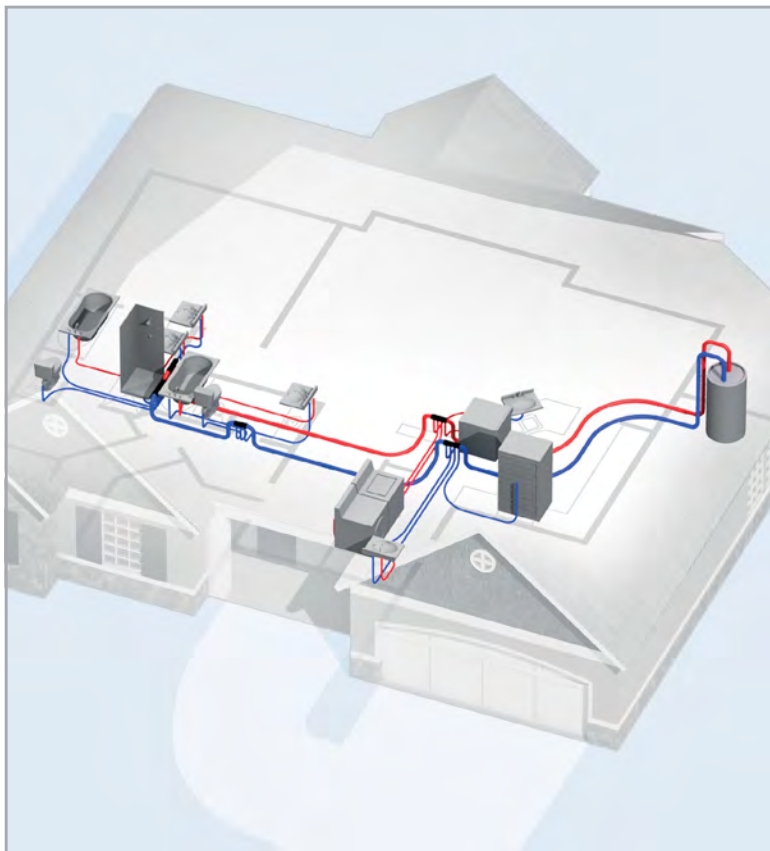
Q2227557  (1)

Q2247557  (2)

Q2237557  (1)

Q2247550  (1)

Q2267550  (1)



Making a ProPEX fitting



- Slide the ProPEX Ring with Stop over the end of the tubing.



- Use a Milwaukee® M12™ ProPEX Expansion Tool to enlarge the tubing and ring. If using expander tools other than Milwaukee, be sure to rotate the head one-eighth turn after each expansion. Full expansions are necessary to make a proper connection.



- Place the fitting in the expanded tubing and ring. Good connections result when the ProPEX ring rests snugly against the ProPEX fitting shoulder.

For complete details, refer to the ProPEX connections instructional guide on uponpro.com.

Best practices

- When making a connection in a confined space, allow enough tubing to drop from the cavity so that you have ample room to make a connection. After the connection is made, simply feed the extra tubing back into the cavity and secure properly.
- If the multiport tee you select has extra unused ports, simply stub a 3" to 4" tube on the port and cap with a ProPEX EP plug. Save port for future expansion needs.
- Secure main-line runs every 32" with tube talons to joists to ensure a clean and professional installation.

Jobsite checklist

- ½", ¾" and 1" Uponor AquaPEX tubing
- Uponor PEX tubing cutter
- Milwaukee M12 ProPEX Expansion Tool
- Tube talons and strapping materials
- ProPEX out-of-the-wall support system (ProPEX escutcheons, straps, bend supports, stop and in-line valves)

Field support

Uponor offers an extensive network of highly skilled technical field representatives who are available for jobsite training and support. Their guidance will allow your team to get off to a fast start and ensure you are embracing the latest and best practices installation techniques.

Technical support

Uponor maintains a full-service design department to help you negotiate the complexities of modern construction techniques and code requirements. We'll assist you to create custom installation plans for your project that ensure the most efficient use of materials and maximize system performance.

Call 888.594.7726 or email design.services@uponor.com to discuss your next project.

Uponor Inc.

5925 148th Street West
Apple Valley, MN 55124
USA

T 800.321.4739

F 952.891.2008

Uponor Ltd.

6510 Kennedy Road
Mississauga, ON L5T 2X4
CANADA

T 888.994.7726

F 800.638.9517

uponor

uponorpro.com