

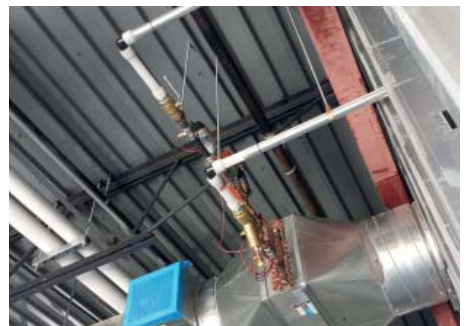
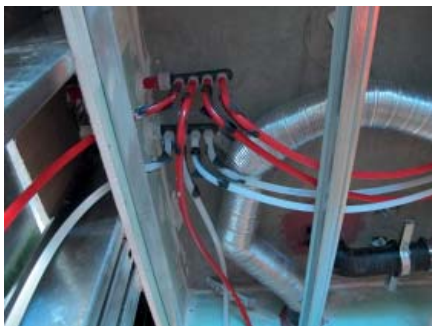


## Less labor. Fewer worries.

With Uponor Commercial PEX Piping Systems, you can have the performance you need and the cost savings you want.

To see for yourself, view our data in the MCAA WebLEM.\*

\*Component method/fittings/PEX expansion/shrink joint



## Uponor Commercial PEX Piping Systems

Uponor is the leading manufacturer of PEX pipe and fitting systems for commercial domestic water, heating hot water and chilled water applications with more than 30 years of proven reliability. With sizes ranging from 3/8" (9.5mm) to 3" (76mm), Uponor PEX pipe and ASTM F1960 ProPEX® engineered polymer (EP) fittings provide installers and building owners with a system that performs better and offers savings through efficient design and installation practices.

### Code approvals

ICC NSPC  
 IPC HUD  
 IMC NFGs  
 IRC NPC of Canada  
 UPC NBC of Canada  
 UMC

### Listings

NSF 14, 61, 359  
 AWWA C904  
 ASTM F876, F1960, F2023, F2657, E84  
 CAN/CSA B137.5  
 CAN/ULC S102.2

## Savings through installation practices

Uponor PEX pipe features a copper tube size (CTS) controlled outside diameter, meaning installers can use the same CTS hangers and supports they're accustomed to with copper pipe. Additionally, using Uponor PEX-a Pipe Support can increase hanger spacing beyond code maximum requirements. For more information, visit [www.uponorpro.com](http://www.uponorpro.com).

## Savings through reduced weight

Uponor PEX pipe is available in both coils and straight lengths, offering installers the benefit of choice depending on the application. Coiled PEX pipe reduces labor by allowing one installer to carry more pipe per trip. Coiled PEX pipe also reduces body strain due to less weight and fewer required fittings (connections). Even compared to WebLEM data, most installers will see additional savings above and beyond with experience.

## Savings through reliability

Uponor PEX piping systems, featuring reliable ProPEX fittings, provide installers with a worry-free installation that requires less labor and, on average, costs less. Best of all, the ProPEX fitting system, which uses Milwaukee® ProPEX Expansion Tools, cannot be dry-fit like other systems. The visual, manufactured connection requires no torches, glues or solvents, and offers a limited **25-year warranty** for Uponor-trained installers.

Temperature and pressure rating for Uponor PEX		
Rated temperature (°F)	Hydrostatic design stress (HDS) psi	Pressure rating for water psi
73.4	630	160
180	400	100
200	315	80

Figure 1: Uponor PEX temperature and pressure ratings

Nominal size (inches)	Pipe type				
	PEX <sub>1</sub>	CPVC <sub>2</sub>	Copper <sub>3</sub>	PP-r <sub>4</sub>	Carbon steel <sub>5</sub>
Weight of pipe per 100 feet (lbs)					
1/2	6	22	29	11	85
3/4	10	30	46	16	113
1	20	44	66	19	168
1 1/4	34	61	88	29	227
1 1/2	44	74	114	45	272
2	68	102	175	71	365
2 1/2	93	156	248	100	579
3	128	209	333	144	758

Figure 2: Weight comparison of various pipe materials

1. SDR-9 PEX. 2. 1/2"-2" is SDR-11; 2 1/2"-3" is Sch. 80. 3. Type "L" copper. 4. SDR-11 PP-r. 5. Sch. 40 carbon steel.

Fitting type	Nominal size (inches)	System type						
		ProPEX	CPVC <sub>1</sub>	Copper grooved	Copper press	Copper sweat	PP-r <sub>2</sub>	Steel grooved <sub>3</sub>
Elbow	1/2	-	111.1%	-	33.3%	344.4%	466.7%	-
	3/4	-	58.3%	-	33.3%	341.7%	358.3%	-
	1	-	35.7%	-	21.4%	350.0%	328.6%	-
	1 1/4	-	29.4%	-	23.5%	311.8%	288.2%	-
	1 1/2	-	30.0%	-	20.0%	270.0%	245.0%	-
	2	-	8.0%	256.0%	12.0%	240.0%	216.0%	264.0%
	2 1/2 <sub>4</sub>	-	10.0%	216.7%	13.3%	353.3%	226.7%	233.3%
	3 <sub>4</sub>	-	2.6%	181.6%	5.3%	331.6%	207.9%	184.2%
System average			35.6%	218.1%	20.3%	317.8%	292.2%	227.2%

Figure 3: Fitting labor hours (% increase vs. ProPEX)

1. CPVC fitting type is solvent-cement. 2. PP-r fitting type is socket-fusion. 3. Carbon steel fitting type is grooved, Sch. 40. 4. 2 1/2" and 3" ProPEX labor data, which is not currently available in WebLEM, has been calculated by Uponor based on 2" and below labor data.

**Uponor, Inc.**  
 5925 148th Street West  
 Apple Valley, MN 55124  
 USA

T 800.321.4739  
 F 952.891.2008

**Uponor Ltd.**  
 2000 Argentia Rd., Plaza 1, Ste. 200  
 Mississauga, ON L5N 1W1  
 CANADA

T 888.994.7726  
 F 800.638.9517



[uponorpro.com](http://uponorpro.com)