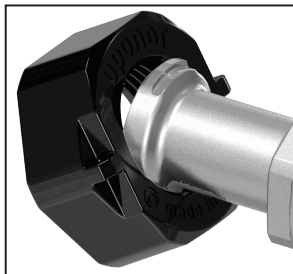


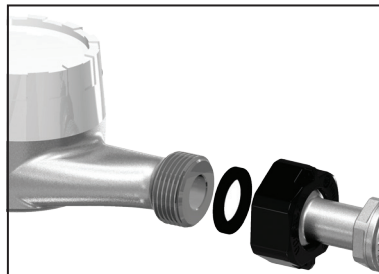
ProPEX[®] water service fitting assembly instructions



Step 1: Locate large tab on bottom of fitting.



Step 2: Insert large tab into nut.



Step 3: Fasten assembly to meter. Hand tighten plus up to ½ turn.

Important! Do not overtighten.

Note: Use engineered polymer (EP) nuts for plastic meters and metal nuts for metal meters.