

Engineered Polymer (EP) Flow-through Multi-port Tee

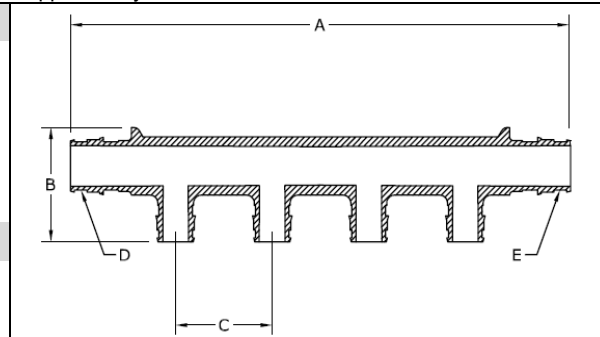
Submittal information
Revision G: July 23, 2019

Project information

Job name:	
Location:	Part no. ordered:
Engineer:	Date submitted:
Contractor:	Submitted by:
Manufacturer's representative:	Approved by:

Technical data

Material:	Engineered polymer (EP)
Maximum temperature (no pressure):	320°F (160°C)
Maximum working temperature/pressure:	210°F (99°C) at 150 psi
Maximum multi-port tee flow for 3/4" inlet:	13.2 gpm at 12 fps; 8.8 gpm at 8 fps
Maximum multi-port tee flow for 1" inlet:	21.8 gpm at 12 fps; 14.5 gpm at 8 fps



Product information and application use

Engineered polymer (EP) flow-through multi-port tees feature 3/4" or 1" ProPEX® inlets with 1/2" ProPEX branch outlets.¹ The tees are made of EP, a high-performance material used in demanding, hot-water applications.

✓	Description	Part number	A	B	C	D	E	Weight
	EP Flow-through Multi-port Tee, 2 outlets, 3/4" x 3/4" ProPEX	Q2227557	4.40"	1.77"	1.25"	3/4" ProPEX	3/4" ProPEX	0.08 lbs.
	EP Flow-through Multi-port Tee, 3 outlets, 3/4" x 3/4" ProPEX	Q2237557	5.70"	1.77"	1.25"	3/4" ProPEX	3/4" ProPEX	0.10 lbs.
	EP Flow-through Multi-port Tee, 3 outlets, 1" x 3/4" ProPEX	Q2231057	6.20"	1.88"	1.25"	1" ProPEX	3/4" ProPEX	0.14 lbs.
	EP Flow-through Multi-port Tee, 4 outlets, 3/4" x 3/4" ProPEX	Q2247557	7.80"	1.77"	1.50"	3/4" ProPEX	3/4" ProPEX	0.14 lbs.
	EP Flow-through Multi-port Tee, 4 outlets, 1" x 3/4" ProPEX	Q2241057	7.10"	2.00"	1.25"	1" ProPEX	3/4" ProPEX	0.17 lbs.
	EP Flow-through Multi-port Tee, 4 outlets, 1" x 1" ProPEX	Q2241051	7.68"	1.88"	1.25"	1" ProPEX	1" ProPEX	0.18 lbs.
	EP Flow-through Multi-port Tee, 6 outlets, 3/4" x 3/4" ProPEX	Q2267557	9.41"	1.62"	1.25"	3/4" ProPEX	3/4" ProPEX	0.18 lbs.
	EP Flow-through Multi-port Tee, 6 outlets, 1" x 3/4" ProPEX	Q2261057	9.60"	2.00"	1.25"	1" ProPEX	3/4" ProPEX	0.24 lbs.
	EP Flow-through Multi-port Tee, 6 outlets, 1" x 1" ProPEX	Q2261051	9.90"	2.00"	1.25"	1" ProPEX	1" ProPEX	0.25 lbs.

Installation

For a mounting bracket, use any product designed to mount 1" copper pipe for the 3/4" EP flow-through multi-port tees or 1/4" copper pipe for the 1" EP flow-through multi-port tees. For more information, refer to the Uponor Piping Systems Installation Guide.

Standards

ASTM E84; ASTM E119; ASTM E814; ASTM F877; ASTM F1960; CAN/CSA B137.5; NSF 14; NSF 61

Codes

IBC; IMC; IPC; IRC; NPC of Canada; NSPC; UMC; UPC

Listings

cNSFus-pw; cQAlus P321; HUD MR 1269; ICC-ES-PMG-1006; ICC-ES-PMG-1012; U.P. Code

Related applications

PEX-a plumbing systems

Contact information

Uponor Inc.
5925 148th Street West
Apple Valley, MN 55124 USA
Phone: 800.321.4739
Fax: 952.891.2008
uponorpro.com

Uponor Ltd.
6510 Kennedy Road
Mississauga, ON L5T 2X4 CANADA
Phone: 888.994.7726
Fax: 800.638.9517
uponorpro.com

¹ProPEX® is a registered trademark of Uponor Inc. ProPEX™ is a trademark of Uponor Ltd.