

Engineered Polymer (EP) Flow-through Multi-port Horizontal Tee

Submittal information
Revision E: July 23, 2019

Project information

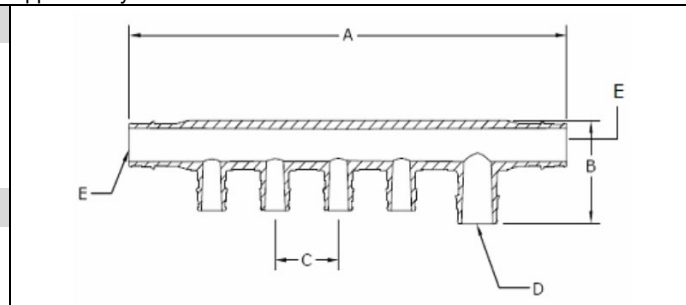
Job name:	
Location:	Part no. ordered:
Engineer:	Date submitted:
Contractor:	Submitted by:
Manufacturer's representative:	Approved by:

Technical data

Material:	Engineered polymer
Maximum temperature (no pressure):	320°F (160°C)
Maximum working temperature/pressure:	210°F at 150 psi (99°C at 10.3 bar)
Maximum multi-port tee flow for 3/4" inlet:	13.2 gpm at 12 fps; 8.8 gpm at 9 fps

Product information and application use

Engineered polymer (EP) flow-through multi-port horizontal tees are used in hot and cold domestic potable water distribution systems. The tees feature 3/4" ProPEX® inlets with 1/2" ProPEX outlets.¹



✓ Description	Part Number	A	B	C	D	E	Weight
EP Flow-through Multi-port Horizontal Tee, 4 outlets, 3/4" x 3/4" x 3/4" ProPEX	Q2247577	8.66"	1.87"	1.25"	0.75"	0.75"	0.12 lbs.

Installation

Use any product designed to mount 1" copper pipe as a mounting bracket. For more information, refer to the Uponor Piping Systems Installation Guide.

Standards

ASTM E84; ASTM E119; ASTM E814; ASTM F877; ASTM F1960; CAN/CSA B137.5; NSF 14; NSF 61

Codes

IBC; IMC; IPC; IRC; NPC of Canada; NSPC; UMC; UPC

Listings

cNSFus-pw; cQAlus P321; HUD MR 1269; ICC-ES-PMG-1006; ICC-ES-PMG-1012; U.P. Code

Related applications

PEX-a Plumbing Systems

Contact information

Uponor, Inc.
5925 148th Street West
Apple Valley, MN 55124 USA
Phone: 800.321.4739
Fax: 952.891.2008
uponorpro.com

Uponor Ltd.
6510 Kennedy Road
Mississauga, ON L5T 2X4 CANADA
Phone: 888.994.7726
Fax: 800.638.9517
uponorpro.com

¹ProPEX® is a registered trademark of Uponor, Inc. ProPEX™ is a trademark of Uponor Ltd.