

1" Copper Valveless Manifold

Submittal information
Revision C: May 2, 2019

Project information

Job name:

Location:

Part no. ordered:

Engineer:

Date submitted:

Contractor:

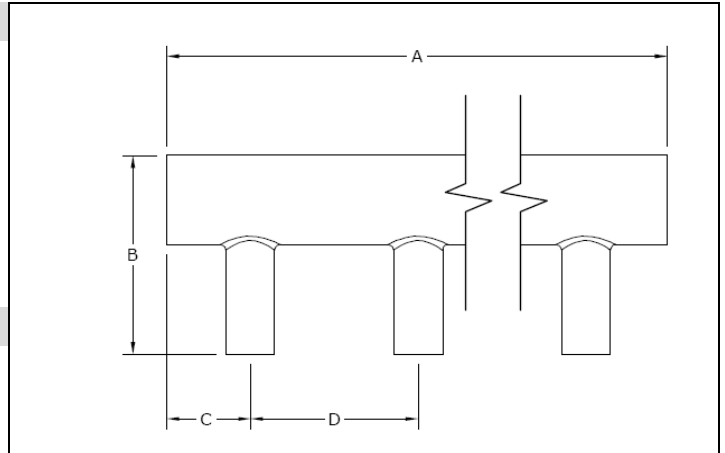
Submitted by:

Manufacturer's representative:

Approved by:

Technical data

Material:	Type L copper
Maximum temperature (no pressure):	320°F (160°C)
Maximum working temperature/pressure:	210°F (99°C) at 150 psi
Maximum flow rate:	21 gallons per minute (gpm)



Product information and application use

Use 1" copper valveless manifolds in hot and cold domestic potable-water distribution systems or radiant heating and/or cooling systems that do not require individual loop control.

✓ Description	Part number	A	B	C	D	Weight
1" Copper Valveless Manifold, 3 outlets, 1/2" sweat, 1 1/2" on center	F2751050	7.50"	2.70"	2.50"	1.50"	0.90 lbs.
1" Copper Valveless Manifold, 4 outlets, 1/2" sweat, 1 1/2" on center	F2761050	9.00"	2.70"	2.50"	1.50"	0.90 lbs.

Installation

For mounting brackets, use any product designed to mount 1" copper pipe. Use Uponor ProPEX® brass sweat adapters, ProPEX copper press adapters or QS-style copper fitting adapters to make connections to Uponor PEX pipe. Any bend within 6 inches of the ProPEX connection to the manifold requires the use of a tube talon (F7050750) or bend support (A5110500). All manifolds require a 1" copper end cap and applicable transition fitting.

Standards

CAN/CSA B137.5; ASTM F877

Codes

IPC; UPC; NSPC; NPC of Canada

Listings

1/2" UL 1821; ULC/ORD-C199P; HUD MR 1269; ICC ESR 1099; IAPMO; ANSI/NSF 14- and 61-certified

Related applications

PEX-a plumbing systems
Radiant heating and cooling systems

Contact information

Uponor, Inc.
5925 148th Street West
Apple Valley, MN 55124 USA
Phone: 800.321.4739
Fax: 952.891.2008
uponorpro.com

Uponor Ltd.
6510 Kennedy Road
Mississauga, ON L5T 2X4 CANADA
Phone: 888.994.7726
Fax: 800.638.9517
uponorpro.com