

Case 2010 Histories

Uponor Radiant Rollout Mat Offers Faster Installation, Easy Commissioning For Commercial Applications

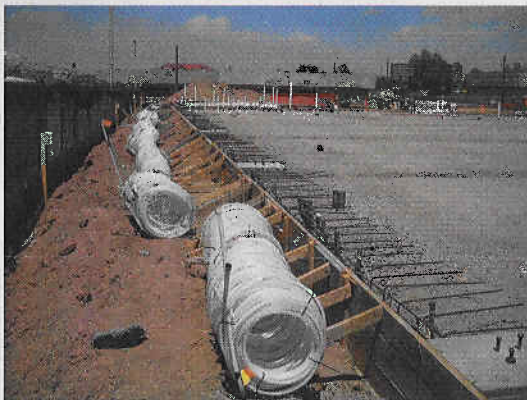
The best endorsement you can ever make is to use the products you sell. And that's exactly what Miller Bonded Inc. (MBI), a mechanical contracting company in Albuquerque, N.M., is doing. When it came time to choose the most efficient and labor-saving heating system to install in their 16,000-sq.-ft. pipe fabrication shop, they chose Uponor's Radiant Rollout™ Mat.

The Radiant Rollout Mat features a custom-designed, prefabricated network of Uponor PEX-a cross-linked polyethylene tubing for a fast, efficient and consistent method to install radiant heating and cooling systems in large commercial areas. Using the mats offers up to 85% reduction in installation time – often reducing the tubing installation time from weeks to days – helping projects stay on schedule and meet tight deadlines. And because the mats are pre-pressurized, they provide a dependable commissioning of the hydronic radiant system.

And that is exactly why MBI selected the Radiant Rollout Mat.

"We chose it simply because we wanted to save money on the installation," says Steve Zamora, piping foreman at MBI. "One of the main benefits of using the Radiant Rollout Mat is the time savings. Anytime you can get a product installed faster, you're going to make the contractor money."

He estimates the new mat system was about five times faster than the conventional way of installing a radiant heating system. Bobby Rob-



erts, journeyman plumber with MBI, is a big fan of how fast it installs.

"The mat cut our time down quite a bit," he says. "It really saves on labor. I think it's going to catch on pretty good."

Roberts adds that what would have normally taken them a couple of weeks to loop and tie down only took about eight hours with the Radiant Rollout Mat.

Zamora also appreciated how user-friendly

it was to install. He says the design was straightforward and easy to understand (showing all the different zones and manifold locations). He also appreciated all the parts were labeled properly so that when they came off the truck, his team was able to easily and quickly reference the submittal sheet to match up the parts and locations.

"When I arrived on the jobsite, it was real easy to unload," he says. "The mats are lightweight. We put them on a forklift and drove them out to where we could stage them. And then we just rolled them out."

He adds that the mats were also easy to roll out and secure. "The speed that we did all this and the amount of area that we covered was phenomenal."

An additional benefit to the Radiant Rollout Mat is that installers do not have to follow the iron workers with the rebar.

"We didn't have to step through rebar squares and bend over to attach it," Zamora says. "It was much better on the back."

The simplicity of installation also made Earl Freeman's job much easier. He's the owner of Freeman's Finest Construction and helped install the Radiant Rollout Mat with MBI.

"The speed of installation helped me considerably since now I can schedule a job and know that if I use these mats that the job will be completed quickly," he says. "I'm sold on this type of radiant heat mat and will definitely use this product in the future."

Circle No. 42